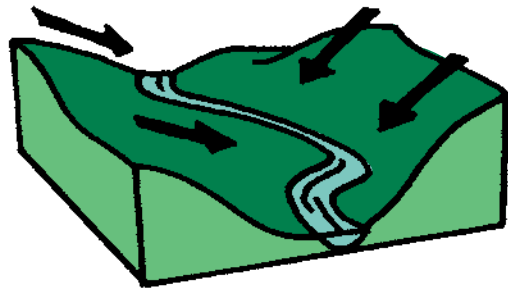


Let's Learn About the Schuylkill River Watersheds



Q. What's a WATERSHED?

A. The WATERSHED of a stream is all of the land that sheds water into that stream when it rains. When rain falls on land, it drains or runs off to the nearest stream or river that is downhill.



How Can You and Your Family Protect Our Water?

Hey Kids! Protecting our water supply isn't just an adult thing. It's up to each and every one of us! Storm drains in the street (also called sewer inlets) are for water only. Rain and melting snow pick up all kinds of pollutants as they wash over our sidewalks, streets, parking lots and yards. All of this dirty water flows into storm drains, many of which empty into local creeks and into the Schuylkill River. You can help make our waterways safer for drinking, fishing and boating by keeping pollution and trash out of storm drains.

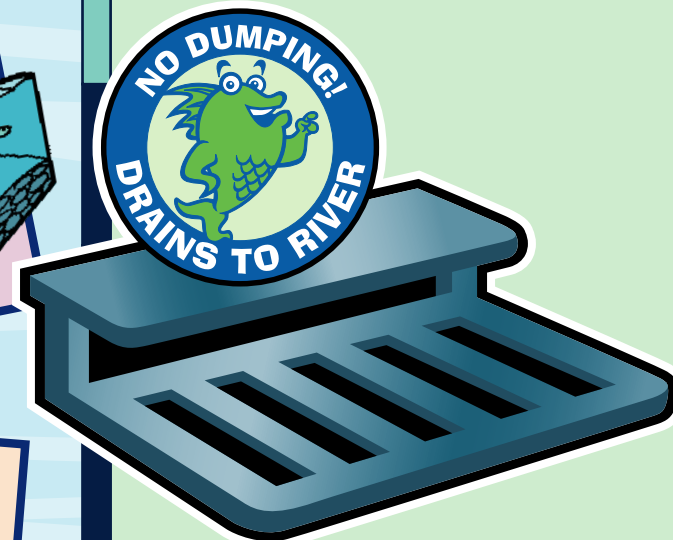
Did you know that the word *Schuylkill* means "water of uncommon purity"?

Did you know that the water that you drink and bathe in comes from the Schuylkill River, the streams or reservoirs that flow into the River, or sometimes from water trapped under ground, which is called the groundwater table?

Did you know that pet wastes wash off our yards, sidewalks and streets into storm drains when it rains and end up in the river? Clean up after your pets!

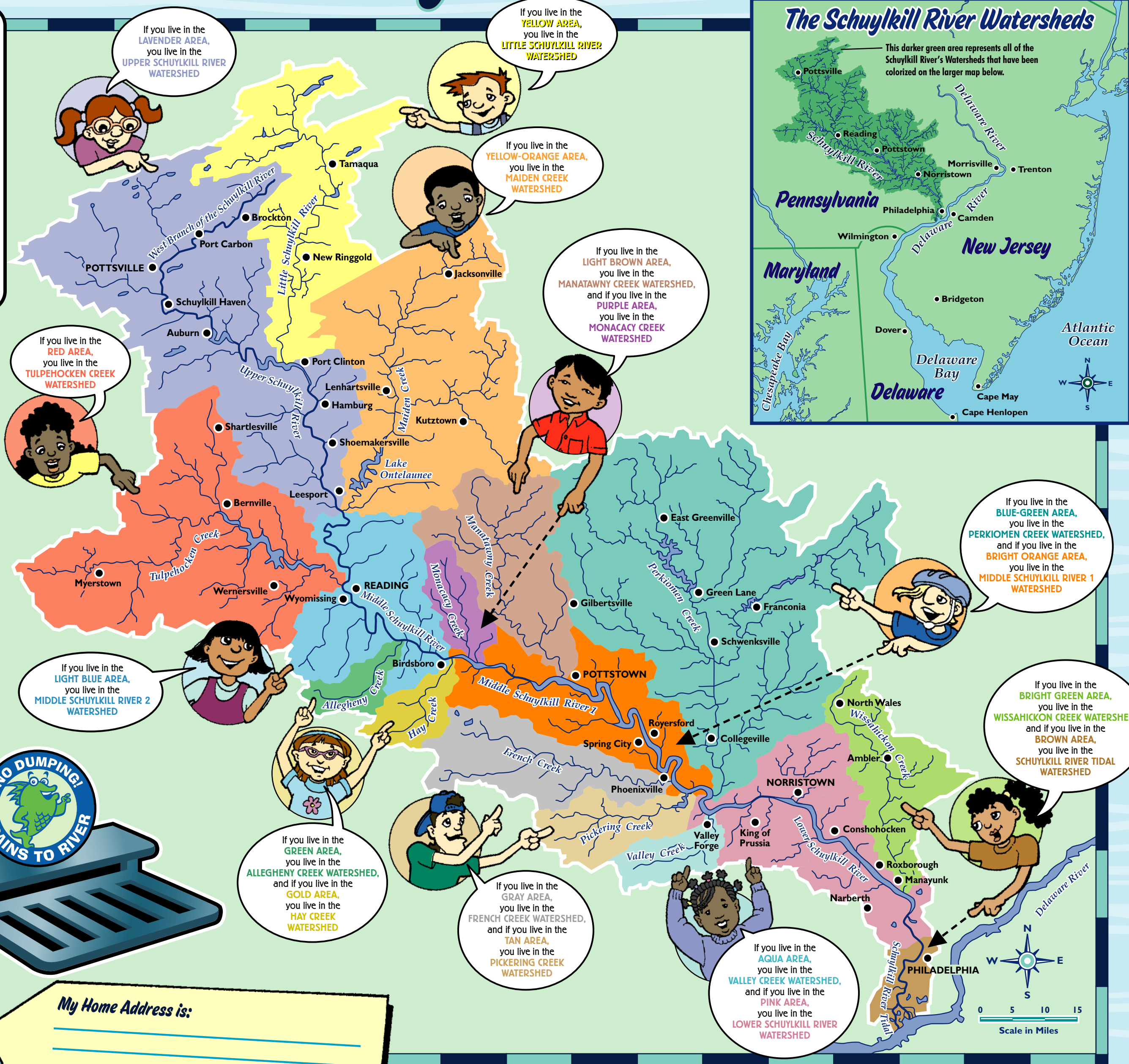
HELP KEEP OUR WATER CLEAN & SAFE
PICK UP AFTER YOUR DOG

Did you know that litter from the streets washes into storm drains when it rains and ends up in the river? Be sure to put trash in trash cans, not in the street!



My Home Address is:

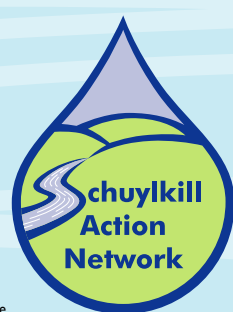
My Watershed Address is:



To request additional copies, contact:
Partnership for the Delaware Estuary
110 South Poplar Street, Suite 202
Wilmington, DE 19801
800-445-4935
www.DelawareEstuary.org



This poster was financed in part by the Pennsylvania Department of Conservation and Natural Resources, Bureau of Recreation and Conservation in support of the Schuylkill Action Network through a Keystone Recreation, Park and Conservation Fund grant to the Schuylkill River Greenway Association.



Schuylkill Action Network
Protecting the source of our drinking water:
The Schuylkill River
www.schuylkillactionnetwork.org
Members of the Schuylkill Action Network share information, expertise, and technology to help each other achieve a shared vision of clean water and a healthy environment for the Schuylkill River and its tributaries.